



AmphiCoat[®]

A Subsidiary of TeKONTROL, Inc.

THE AMPHISEAL SYSTEM Technical Briefing

AMPHISEAL
AMPHIBOND
AMPHIMESH

711 West Amelia Street
Orlando, Florida U.S.A. 32805-1404
(877) 576-7361
www.amphicoat.com

AmphiCoat Proprietary Data

What is the AmphiSeal System?

The AmphiSeal System is a flexible, water resistant, cementitious coating with extreme adhesive properties. Adheres strongly to masonry, concrete, tiles, metal, wood, most plastics, DensGlass and Styro-Foam.

AmphiSeal System Components

- **AmphiSeal**
- **AmphiBond**
- **AmphiMesh**

AmphiSeal

A Portland cement based coating, develops a highly durable, low maintenance, damp proof barrier that resists both positive and negative hydrostatic pressure.

- Water Resistant
- Environmentally Friendly
 - Non-toxic
 - No Volatile Organic Compounds (VOC)
- Can be textured for architectural applications
- Fills and seals the pores and voids in surfaces
- Imparts a strong durable finish with a uniform appearance
- May be used for interior or exterior applications
- Comes in a variety of embedded standard colors.

AmphiBond

A non-reemulsifiable, acrylic latex, high performance polymer formulated as a bonding agent for **AmphiSeal**.

- Improves the compressive, tensile, flexural and bond strength of **AmphiSeal**
- Resists fading and is non-yellowing under UV exposure
- High quality: No strong ammonia odor
- Improves chemical resistance to acids and alkalies
- Aids in controlling shrinkage cracking
- Reduces permeability for excellent freeze-thaw resistance.

AmphiMesh

Reinforcing fiberglass mesh is made of multi-strand, interwoven glass fibers. Fibers are coated with resin polymers to enhance their resistance to attack by alkalinity of mixtures containing Portland cement.

- High strength fiberglass weave
- Alkaline resistant
- Use when coating is applied to non-metallic substrates

The AmphiSeal System

- Utilizes a high strength fiberglass fiber core
- 'Sets' in 3 hours
- Achieves maximum strength in 28 days
- Environmentally safe products

Uses for AmphiSeal

- Immediately Improve Appearance *and* Reduce Maintenance Costs
 - Hotels and Motels
 - Condominiums
 - Schools
 - Hospitals
 - Commercial Buildings
 - Housing Developments
 - Government Facilities
 - Historical Buildings

The AmphiSeal System eliminates painting; is water resistant, fade resistant, long lasting, and extremely durable. Use on exterior and interior walls, repair cracked or unsightly concrete in walkways, steps, and pool caps. Improve appeal and guest satisfaction.

AmphiSeal Technical Data

Test	Method	Results
Compressive Strength 28 days	ASTM C109	5,000 psi (34.5 MPa)
Tensile Strength 7 days	ASTM C109	225 psi (1.6 MPa)
Tensile Strength 28 days	ASTM C109	400 psi (2.8 MPa)
Absorption	ASTM C 67	24 hrs < 3.25%
Shore D hardness 21 days	TTP 0035	50
Wind Driven Rain Resistance 20 hours @150 MPH	Fed Spec TT-C-555-B	Water Penetration: None Blister Density/Size: None
Weatherometer 5,000 hours	ASTM D822	No deterioration
Freeze Thaw Resistance 100 cycles	ASTM D822	No cracking or Deterioration
Salt Spray Resistance 500 hrs	ASTM D822	0* Indicates no spall
Fungus Growth 28 days	Fed Test 141 Method 6271	None
Extent of damp area	ASTM C514 Water Permeance	0%
Maximum leakage	ASTM C514 Water Permeance	None
Leakage rate	ASTM C514 Water Permeance	None
Permeance rating	ASTM C514 Water Permeance	Excellent

Features

- Simple application
- Water Resistant, yet allows evaporation from underneath
- Color embedded, paint is not needed
- Flex capability
- Durable – stronger than some concrete (5000 psi after 28 day cure)
- UV Resistant
- Salt and Oil Resistant
- Non-toxic / Odorless

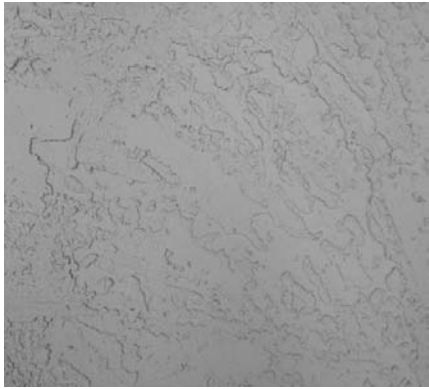
Benefits

- Reduced labor and material costs
- Permanently damp proofs and improves the appearance of surfaces
- Reduced time and cost of money
- Prevents cracking
- Long lasting, low maintenance
- Will not peel, blister, or chip
- No VOC's or harmful fumes

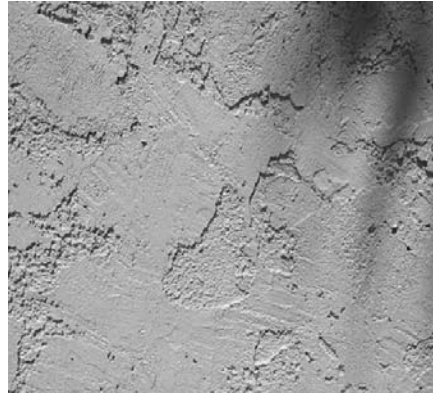
Standard Colors and Textures

- **AmphiSeal** comes in standard colors. Can be matched to most existing colors. May also be stained.
- **Fade resistant color** is an integral part of the coating; allowing surfaces to age evenly and reduce painting and maintenance
- **AmphiSeal** can be made to look like a variety of textures; such as knock down, orange peel, splatter or skip trowel

Achieve a Variety of Textures



Heavy Spanish Lace



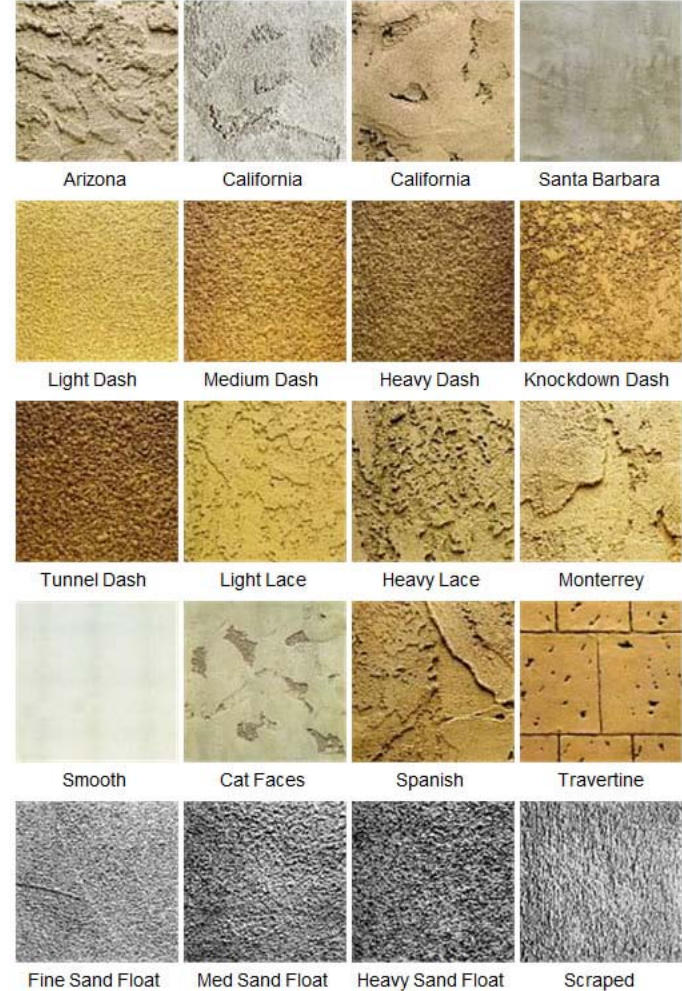
Monterey



Light Dash



Heavy Sand



New Construction

AmphiSeal can be used in new construction to:

- Coat and damp proof exterior and interior walls
- Apply directly on GP DensGlass, or any type of exterior sheathing without a vapor barrier
- Apply directly on metal panels and walls
- Apply directly on Styrofoam walls, cornices and moldings

Renovation and Restoration

AmphiSeal can be used in maintenance, renovation and restoration to:

- Extend the life of substrates and immediately improve their appearances
- Pattern match stucco, brick, concrete, or stone
- Protect underlying reinforcement
- Protect Styrofoam cornice and molding replacement or repair
- Standard colors or custom color matching

Apply AmphiSeal by the Following Methods

- Spray on with a hopper gun
- Trowel onto most any substrate



AmphiSeal Application Process

Step 1 Apply **AmphiSeal** to a clean, structurally sound surface. Remove all efflorescence, salt, deteriorated concrete or masonry, dust, dirt, oils, waxes, form release agents, curing compounds, and loose paint.

Step 2 Apply $\frac{1}{8}$ inch of AmphiSeal directly to the surface of the substrate.*

Step 3 Embed AmphiMesh into the applied AmphiSeal

Step 4 Apply another $\frac{1}{8}$ inch coat of AmphiSeal, creating desired finish texture and design

Step 5 At this point, you have completed the application of the AmphiSeal Coating System from start to finish

*Coat application thickness will vary as a result of existing cracks and undulations or anomalies on substrate surface area and by purpose of application.

Other Cementitious Coatings Application Process

Day 1 Application of Scratch Coat.

Day 2 Application of Finish Coat.

Day 3 Paint Finished Coating System

AmphiSeal – Complete ALL Application Steps in One Day ! Square footage dependent.

Costs: AmphiSeal vs Other Cementitious Coatings

Feature	AmphiSeal	Common Cementitious Coatings
Installation Time	1 Day	3 Days
Warranty	5 Years*	None
Material & Labor Cost/ft ²	\$3.49 / ft ² **	\$6.56 / ft ² **
Total Cost for 10,000 ft ² project	\$34,899.44	\$65,646.00
Savings with AmphiSeal	\$30,746.56	

*Certified AmphiSeal System Applicators must apply AmphiSeal

**Computations based on labor costs of \$2/sf. Labor costs.

AmphiSeal vs Other Cementitious Coatings

AmphiSeal

- Costs less to apply than other cementitious coatings
- Reduces coating application time and project timelines
- Is more durable than other cementitious coatings
- Can replace, or reinforce other cementitious coatings
- Is water resistant
- Is UV resistant

Ordering Process

1. Measure area to be coated
2. Calculate Material *
3. Determine colors from standard color wheels.
4. Place order. Domestic shipping time approximately 10 days; longer for destinations outside of the continental United States

* Coverage will vary as a result of existing cracks and undulations or anomalies on coated surface area. Coat application thickness determined by purpose of application.

Estimating Guide	
Product	Coverage*
AmphiSeal 50 lb (22.7 kg)	50 ft ² (4.7 m ²)
AmphiBond 5 gal (18.9 L) (Mix 1:1 with water)	9 Bags AmphiSeal 450 ft ² (44.3m ²)
AmphiMesh 38 in x 150 ft	450 ft ² (44.3m ²)
Coat Thickness*	1/8 inch (0.32 cm)

Contact Information

AmphiCoat Technologies LLC
711 West Amelia Street
Orlando, FL USA 32805-1401
(877) 576-7361

www.amphicoat.com
www.info@amphicoat.com

Corporate Background

- TeKONTROL, Inc. The parent of AmphiCoat Technologies, Inc. was incorporated **April 24, 1986**
- TeKONTROL, Inc. has a **proven record of reliability** as both Prime and Subcontractor on Government contracts.
- Over the years TeKONTROL has looked for a **high quality, high performance** product, or product line to augment a business that was built on providing a brand of high quality, high performance services to its customers.
- The product we chose would have to **solve problems** that did not already have effective, **efficient solutions**, or solve them **better - more effectively** than the existing solutions.

In 2013, TeKONTROL found that **unique product**. It was a cementitious coating for the construction and building renovation industries that had some **exciting physical properties**:

- **Extreme adhesion** to masonry, concrete, tiles, metal, wood, most plastics, and styro-foam.
- Immediately **improves the appearance** of the surfaces it is applied to
- Is **water resistant**, yet **allows evaporation** from underneath
- Is **stronger and more durable** than other coating systems. Long lasting, low maintenance.
- **Costs Less** to apply

Corporate Background

AmphiCoat Technologies LLC (AmphiCoat) is a wholly owned subsidiary of TeKONTROL, Inc. It was created to procure (product, mixtures, mesh etc.) and market **the AmphiSeal System** line of coating products.

AmphiCoat provides the “coating with the **exciting physical properties**” with a management TEAM that is focused on providing its customers with the very best products and access to TeKONTROL’s many years of professional experience in successfully marketing global business support services.

AmphiCoat provides its unique AmphiSeal System products; **AmphiSeal, AmphiBond and AmphiMesh** to its customers with:

**Great People,
and
GREAT SERVICE!**